

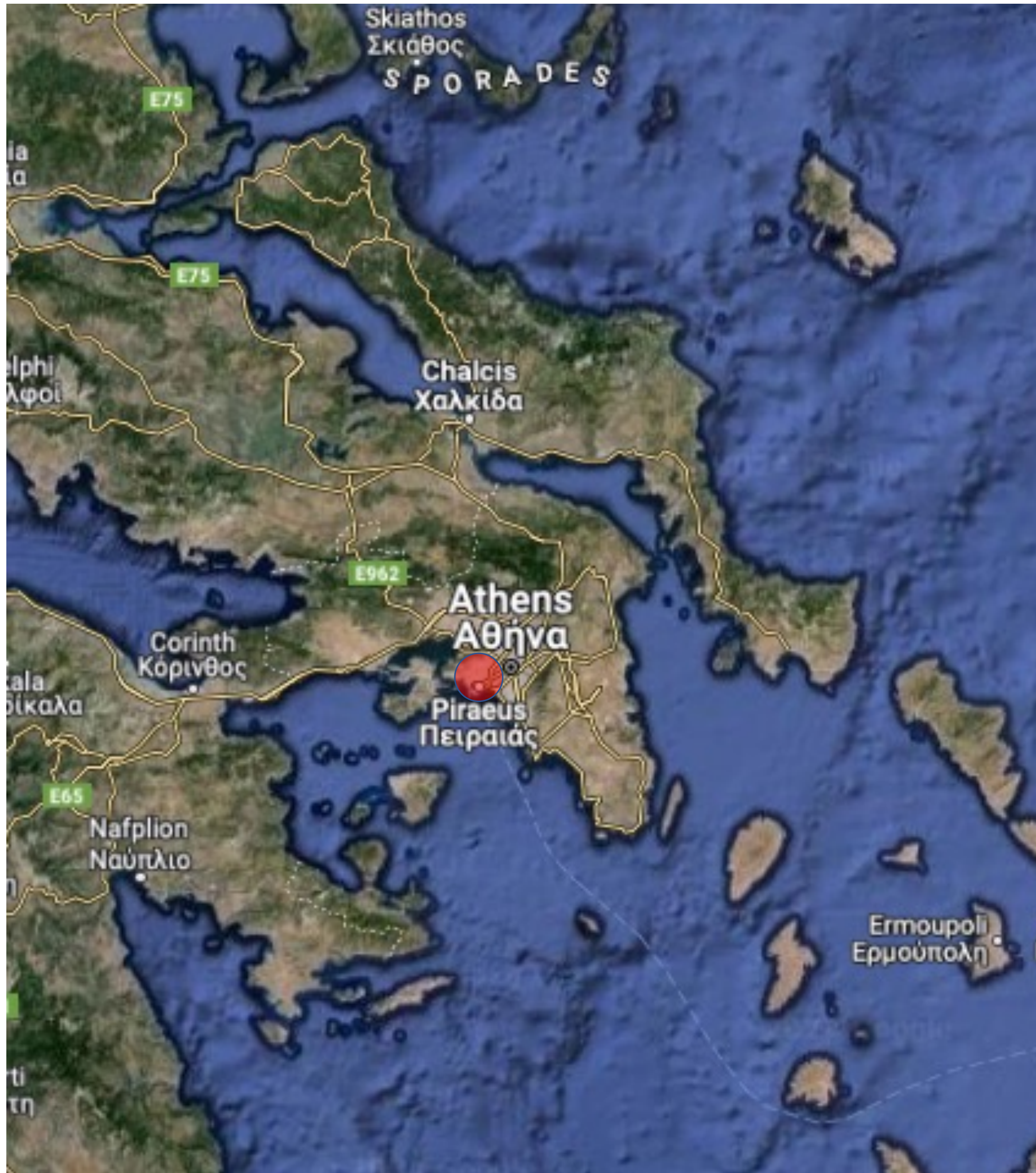


ΕΛΛ  
PIRE AUS



PLATINA  
DEVELOPMENT

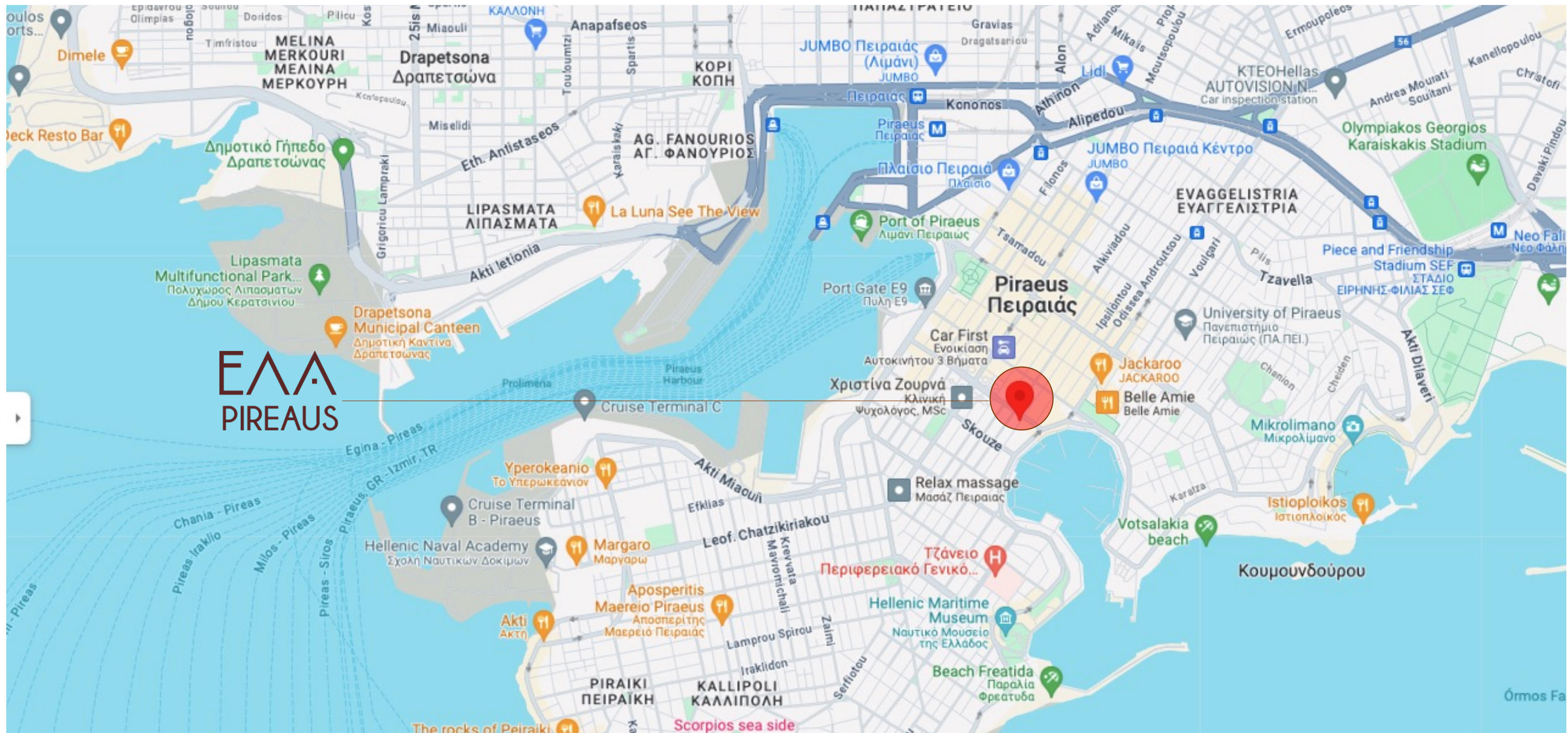




## PIREAEUS

Piraeus, the port city of Athens, stands as a bustling hub of activity and the main gateway to the Greek islands. Its significance stretches back to ancient times when it served as the chief harbor of classical Athens and remains so today, teeming with the vibrant comings and goings of international commerce and tourism. Renowned for its extensive marina, lively fish market, and spirited waterfront lined with eateries and cafes, Piraeus is not just a transit point but a destination in itself. Its popularity among both locals and visitors is marked by the seamless blend of its rich maritime heritage and its role as a modern-day crossroads of cultures and travelers.





A newly developed apartment complex in Piraeus is set to revitalize and invigorate the neighborhood with its contemporary design. These apartments offer versatile living options, perfect for both extended stays and brief visits. Conveniently situated, every significant local amenity is just a leisurely 15-minute stroll away. The building's recent modernization, paired with its outstanding location in Piraeus, provides an excellent accommodation choice for anyone needing a place to stay. Positioned near the bustling marina and the busy port, the apartments cater well to both local and international visitors, offering a slice of Piraeus's dynamic lifestyle.

- 950 m - 12' WALKING TO THE METRO STATION
- 400 m - 5' WALKING TO THE SUPERMARKET
- 300 m - 4' WALKING TO HOSPITAL
- 500 m- 5' WALKING TO ZEAS MARINA
- 900 m- 11' WALKING TO PASSENGER TERMINAL
- 50 m - 1' WALKING TO PHARMACY

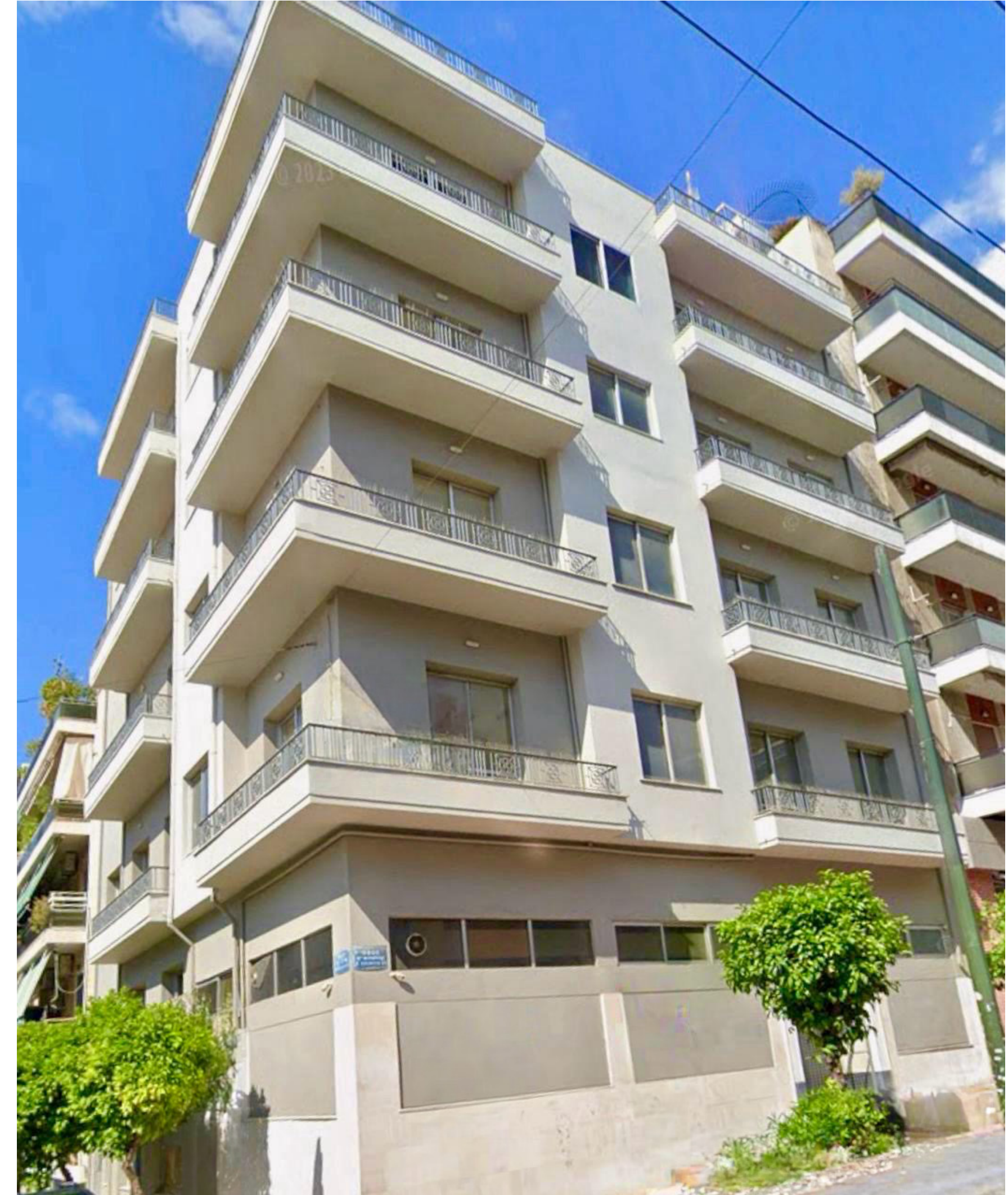


# EAA PIRE AUS

EAA PIRE AUS embraces a design philosophy that is both practical and inviting, weaving together a palette of white and neutral tones with the organic textures of natural wood.

The simplicity of the lines and the uncluttered, fresh look give each interior a feeling of comfort and luminosity. Floors finished in light woods or materials that mimic wood lay a flawless base for these homes, crafting spaces that are not only bright and open but also exude a positive ambiance conducive to wellness and tranquility.

5 FLOORS  
2 DUBLEX  
1 ROOF GARDEN  
23 APARTMENTS



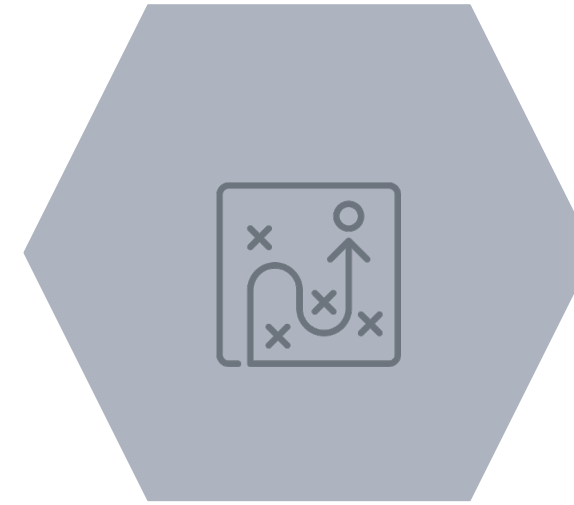
# EAA PIREAUS INVESTMENT HIGHLIGHTS



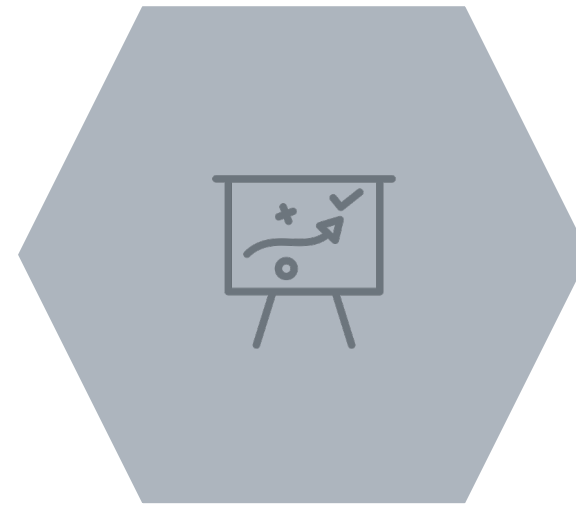
FULLY MANAGED INVESTMENT



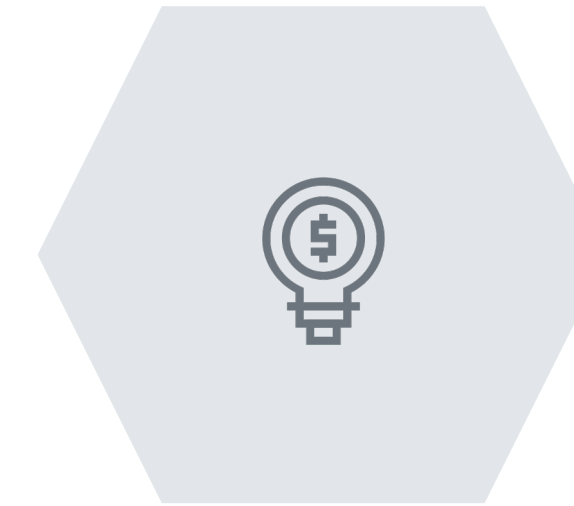
STRONG CAPITAL GROWTH



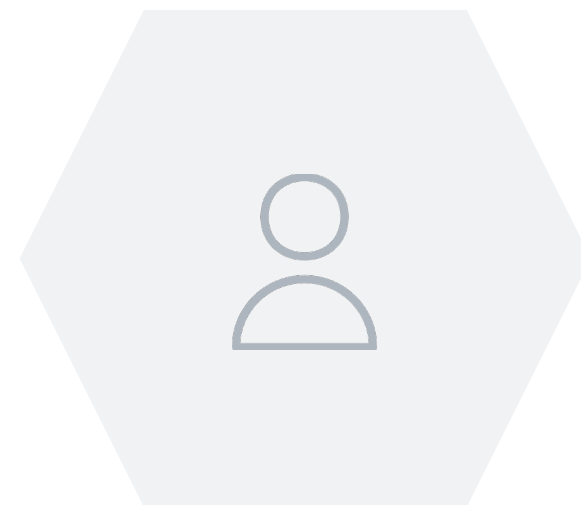
ESTIMATED YIELD



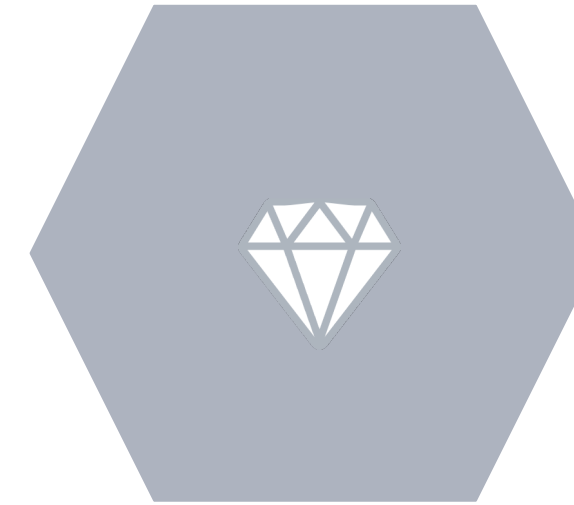
OBJECTIVE MARKET VALUES



BUY-TO-LET PROPERTIES



ADDITIONAL BENEFITS







## MOODBOARDS

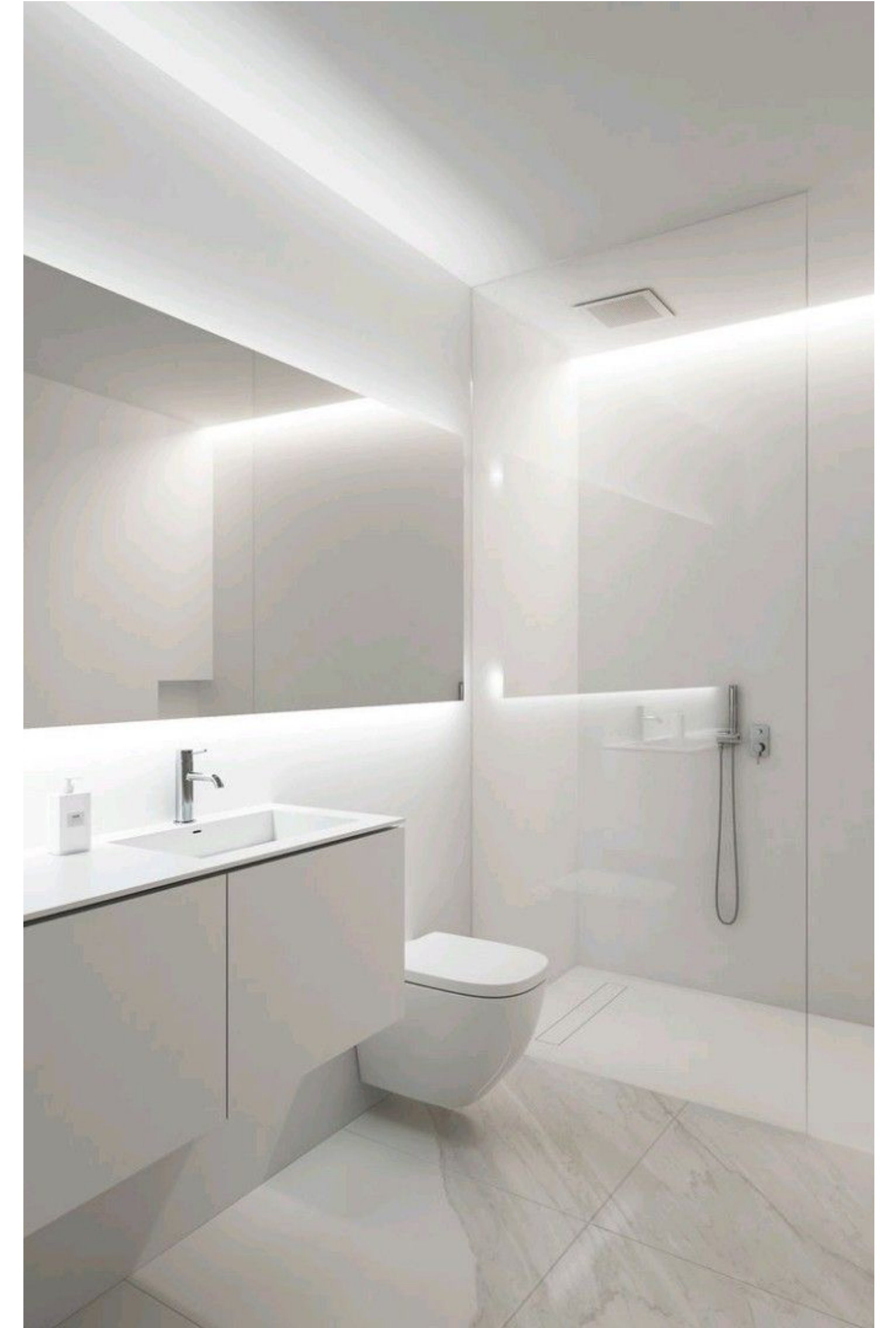


MOODBOARDS





MOODBOARDS





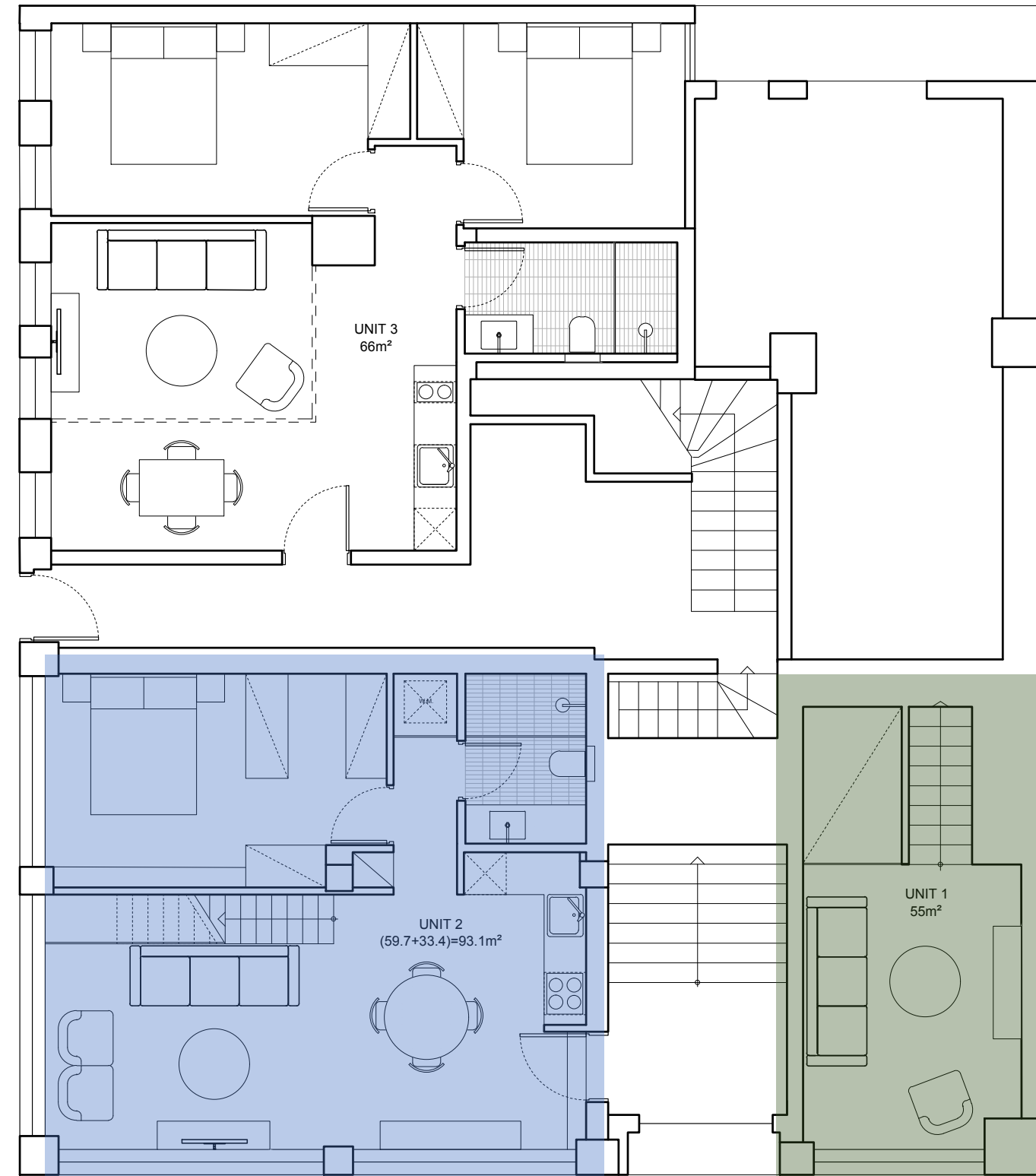
GROUND FLOOR PLAN



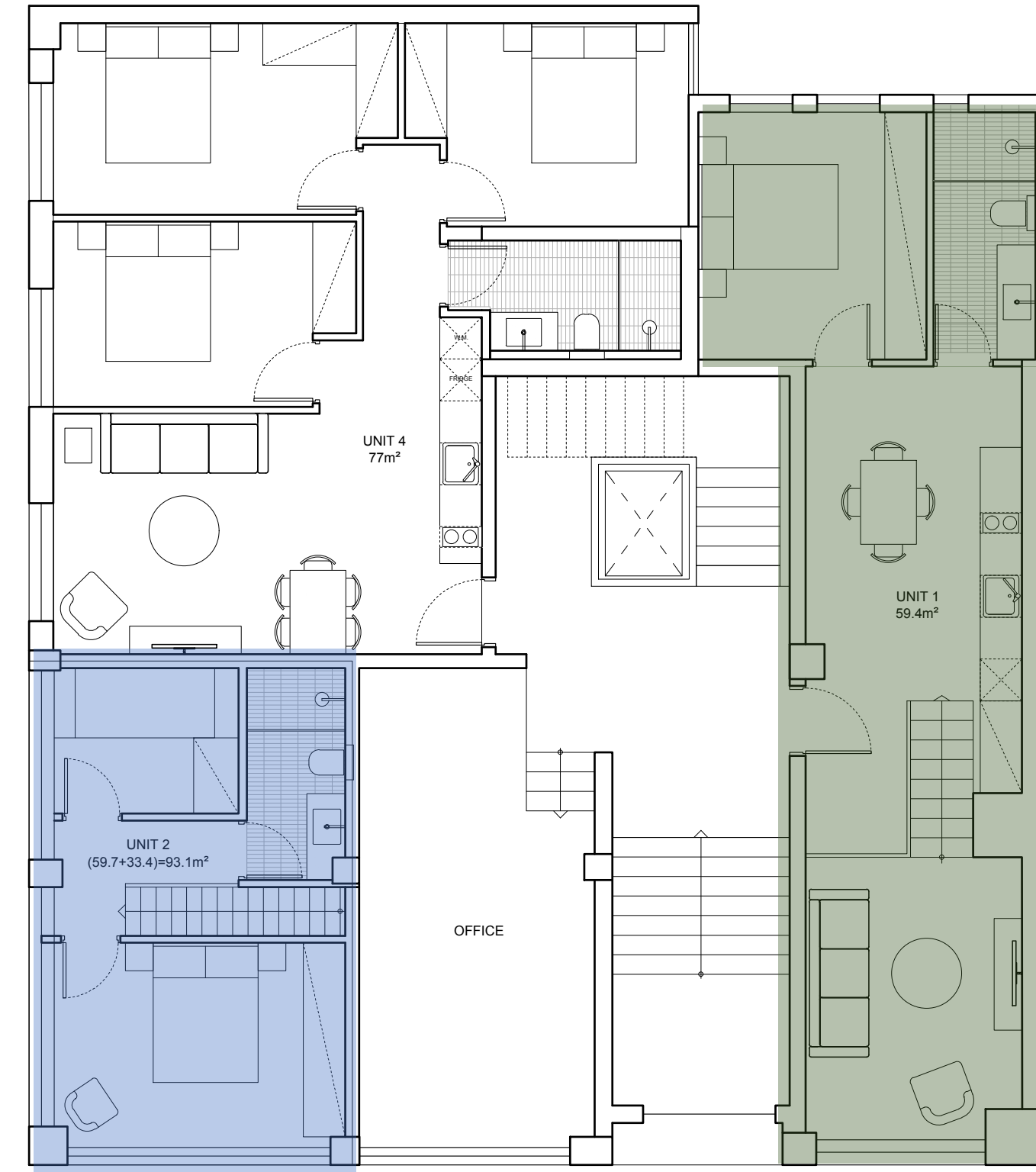
Floor	Units	Size
GROUND	G1	66sqm



**GROUND & MEZANINE  
FLOORS DUBLEX PLAN**



GROUND FLOOR



MEZANINE FLOOR

Floor	Units	Size
GROUND	GM1	114 sqm DUBLEX
&MEZANINE	GM2	93.1 sqm DUBLEX



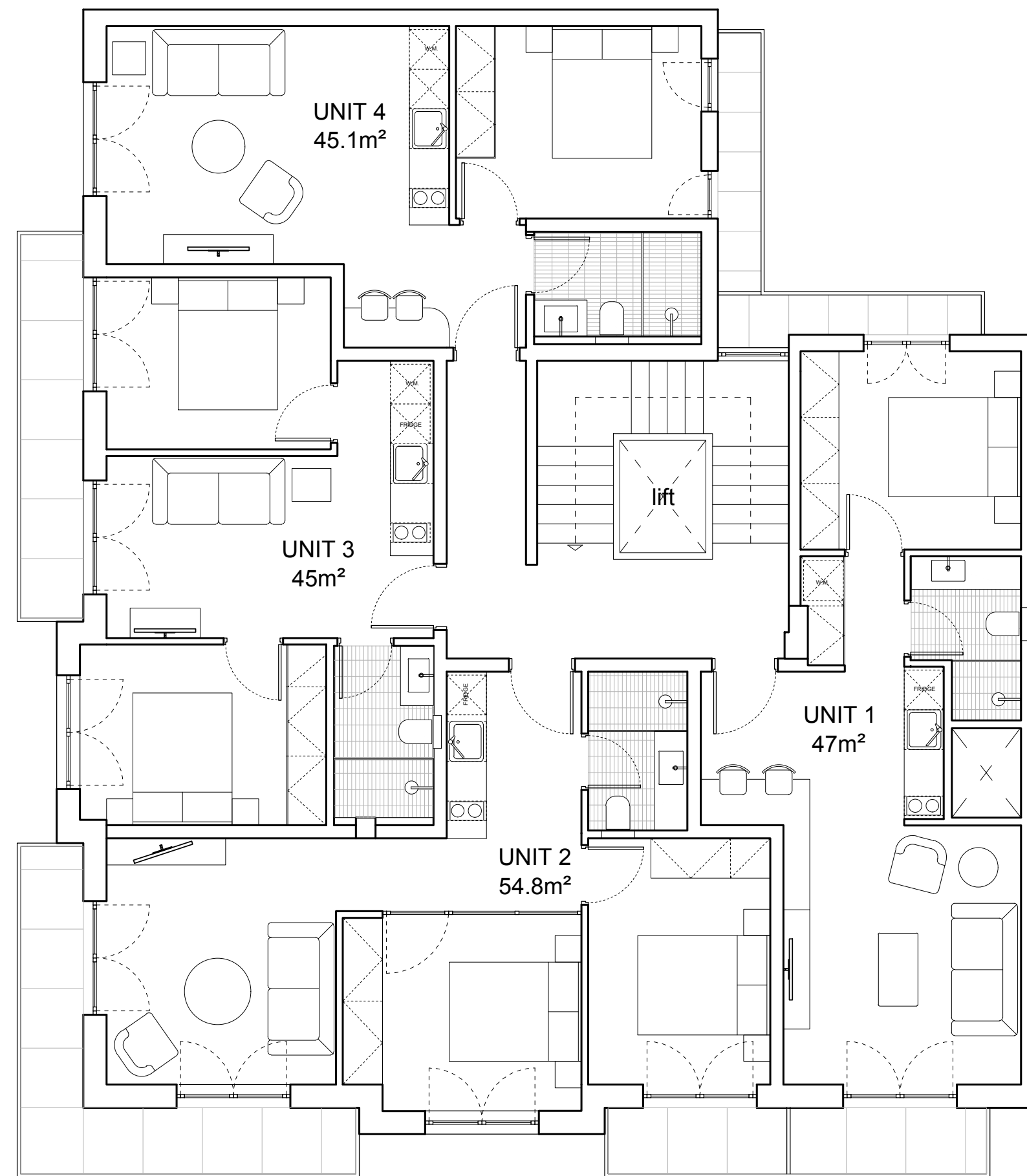
**MEZANINE FLOOR PLAN**



Floor	Units	Size
MEZANINE	M1	77sqm



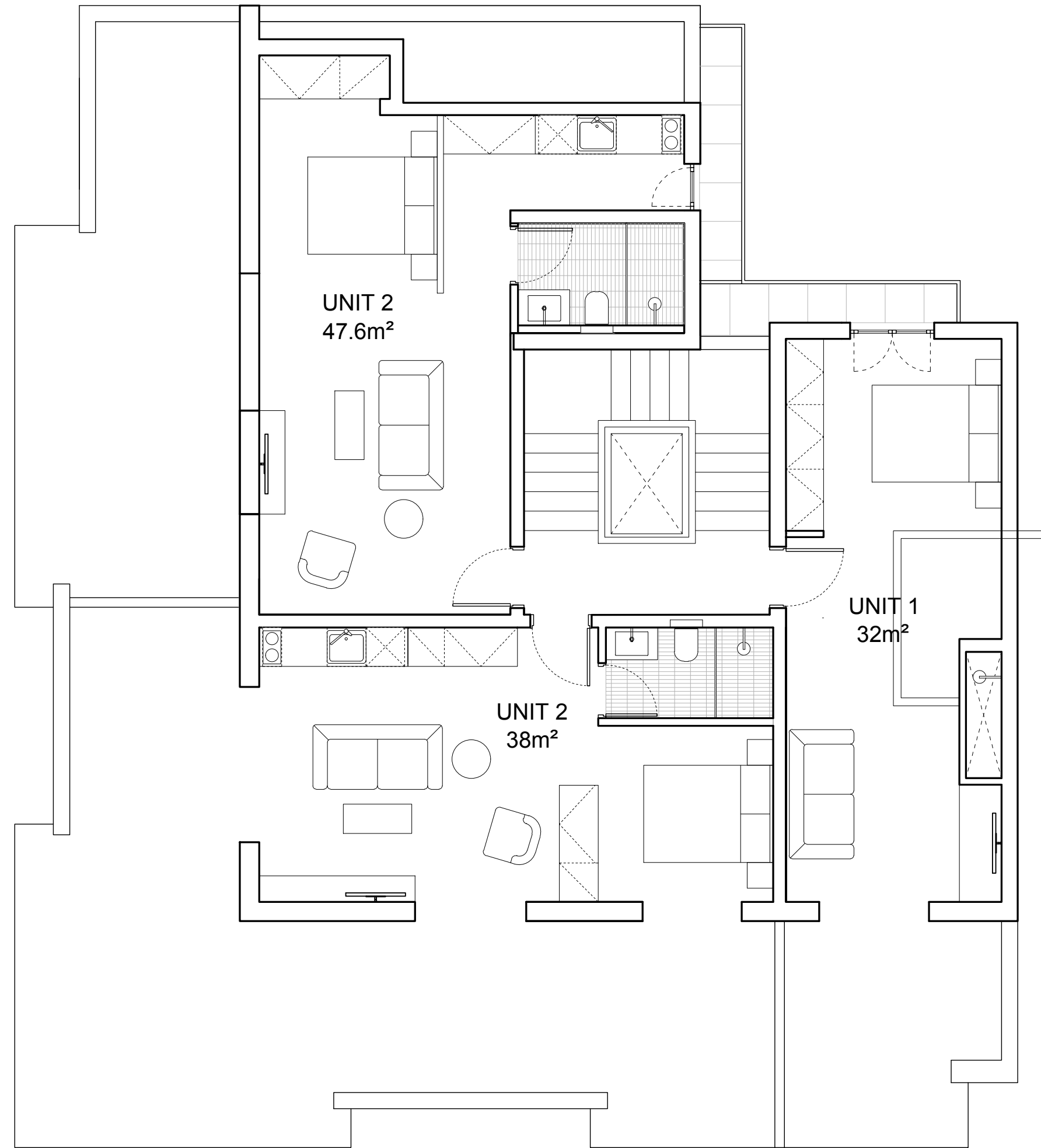
**1ST-4TH FLOORS PLAN**



Floor	Units	Size
4TH FLOOR	1-4	47sqm- 54.8sqm – 45sqm- 45.1 sqm
3RD FLOOR	1-4	47sqm- 54.8sqm – 45sqm- 45.1 sqm
2ND FLOOR	1-4	47sqm- 54.8sqm – 45sqm- 45.1 sqm
1ST FLOOR	1-4	47sqm- 54.8sqm – 45sqm- 45.1 sqm



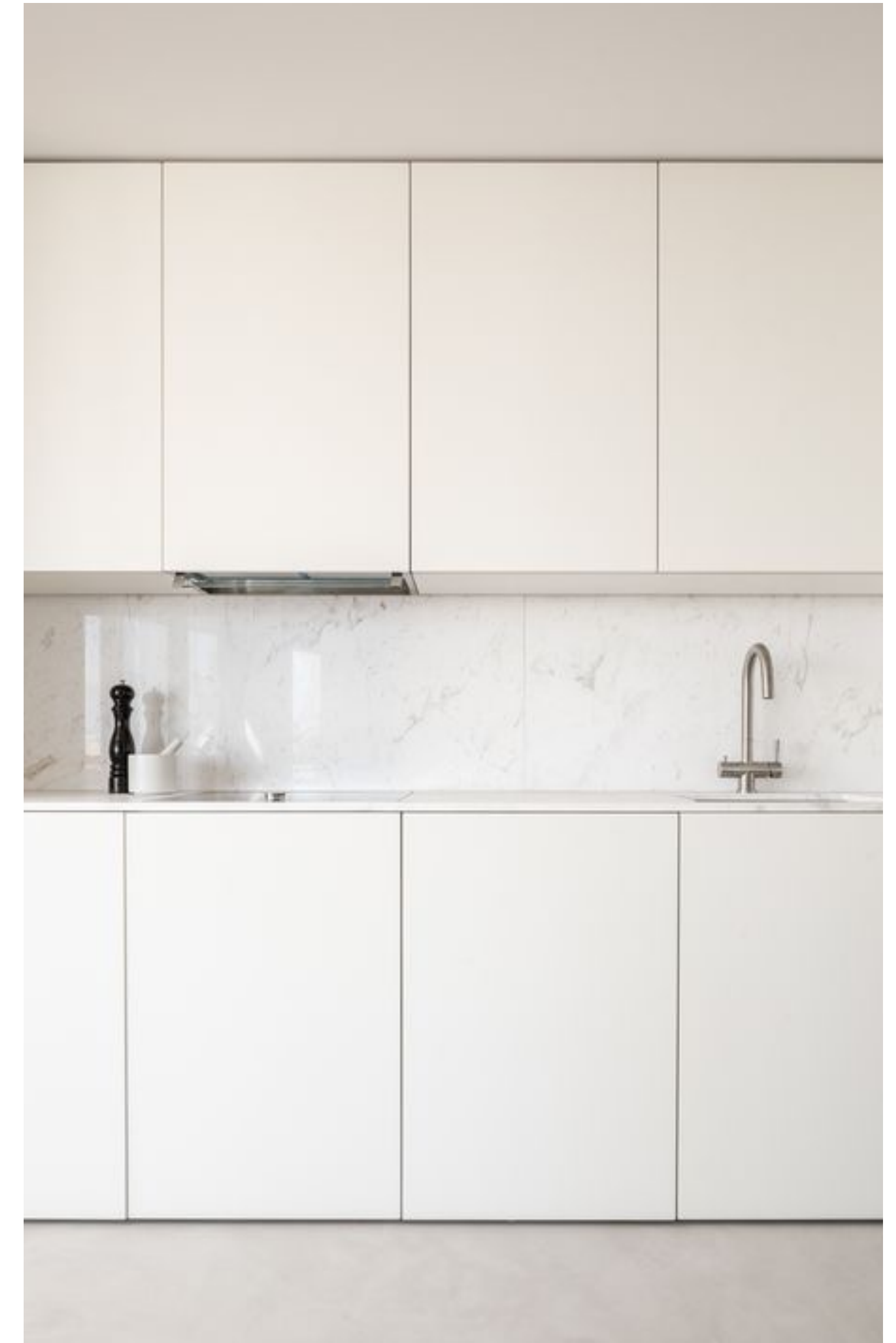
**5TH FLOORS PLAN**



Floor	Units	Size
5TH FLOOR	1-3	32sqm – 38sqm – 47.6sqm



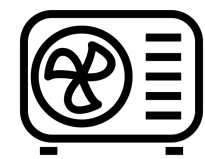
MOODBOARDS



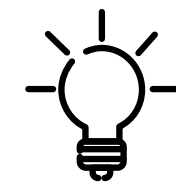


ΕΛΛ  
PIREAUS

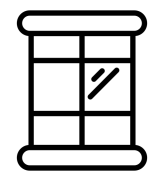
## ADDITIONAL FEATURES



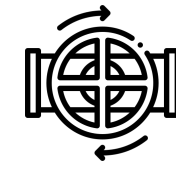
HEAT PUMP



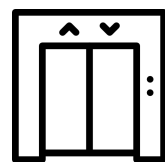
NEW LED TECHNOLOGY  
LIGHTING



ALUMINUM FRAMED  
WINDOWS WITH DUAL  
GLAZING



NEW MECHANICAL WIRING.  
PLUMPING & DRAINAGE  
SYSTEM INSTALLATION



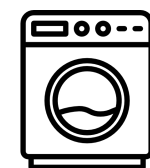
NEW ELEVATOR WITH  
RELEASE SYSTEM



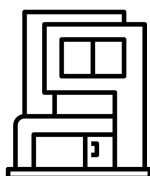
ELECTRIC ROLLER SHUTTERS



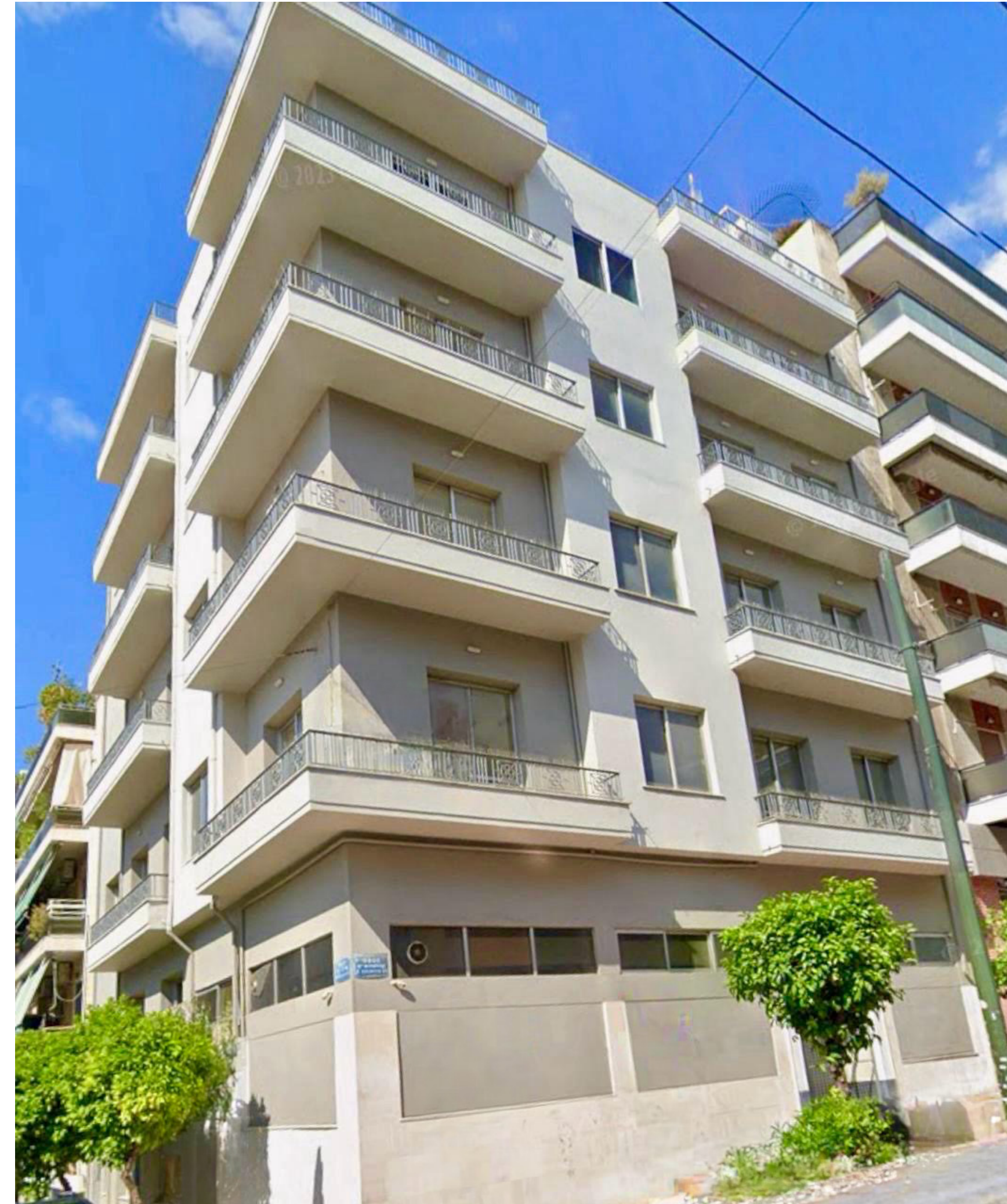
MODERN DESIGN



IN-HOUSE LAUNDRY



FULLY EQUIPPED





ADDRESS

3, XANTHOU GLYFADA  
ATHENS GREECE

CONTACT DETAILS

[www.platinaplus.com](http://www.platinaplus.com)  
[info@platinaplus.com](mailto:info@platinaplus.com)

